

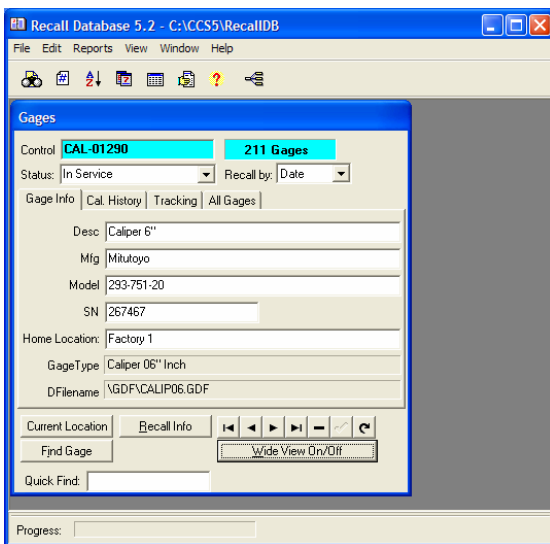


Recall Database

The Recall Database application functions as the memory of the Vantek Calibration Control System. It recalls the reports made in Calspex and keeps accurate records of all calibrated gages and gage information. The Recall Database's most valuable asset however is its ability to organize what were once reams of paperwork into manageable lists and tables. Within seconds you can produce any type of report showing all of your company's gages. They can be organized by department, manufacturer, model, etc. You can use the already customized reports to produce due scrolls, export inventory or import inventory.

The Recall Database also has the capabilities to handle all aspects of complete gage tracking in your facility. These features allow you to track which gages were used on specific parts, by whom, and for what process. This information is indispensable when attempting to assess potential product recalls based on failed gage calibrations. The Recall Database can now base recalibration criteria not only on pure dates, but tracking information as well. This allows you to specify that a gage should be recalibrated after measuring 100 parts, or after 10 hours of use.

The Recall Database can be integrated with our Calspex module providing you with a complete calibration/gage tracking software solution. It can handle an unlimited number of records and the new database drivers increase both speed and reliability. A networked database allows users to share and view endless amounts of information over their company's network.



Inventory List (211 Rows)

Control	Name	Mfg	Model	HLocation
500192	Gage Block Set	Mitutoyo	88 Pc. Rectangular (Grade 2)	Calibration Lab
500280	Gage Block Set	Mitutoyo	20 Pc. Rectangular (Grade 3)	Calibration Lab
CAL-0003	Caliper 6"	Mitutoyo	751-200 Digital	Factory 1
CAL-01290	Caliper 6"	Mitutoyo	293-751-20	Factory 1
CAL-0400	Caliper 6"	Mitutoyo	293-720-10	Factory 2
CAL-1007	Caliper 6"	Starrett	900-135 Digital	Factory 3
CAL-1009	Caliper 6"	Starrett	120	Factory 3
IND-3001	Indicator 0-1"	Starrett	750 Dial	Factory 1
MIC-0030	Micrometer 1-2"	Mitutoyo	721-500 Digimatic	Factory 2

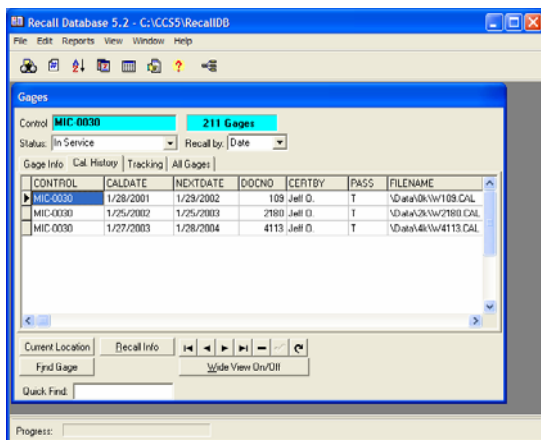


RECALL DATABASE FEATURES

- Use the quick-find boxes to locate specific gages in seconds.
- View calibration histories and tracking information with a single click.
- Use the Find Gage feature to find gages based on any criteria (description, manufacturer, model, location, etc...).
- Installed reports for finding gages due for calibration in any time period, and gages overdue for calibration.
- Quickly see where gages have been checked out to.
- Use reports for doing searches like: all gages at a specific location, all the micrometers, the gages from an individual manufacturer, all calibrations done last month, etc...
- Check out gages to specific locations for tracking gages internally in a plant.
- For tracking non-conformance parts, track which gages were used to make which parts.
- Use Gage Tracking to track gages loaned to outside vendors, or outside inspection labs.
- Track which gages are currently being used, how often, and by whom.
- Use the built-in reports for standard (common) reports.
- Create an unlimited number of reports using our Custom Report Writer.
- Use other query and reporting tools that can access standard dBase files (such as Microsoft Access).
- New application to automatically generate a due calibration report at startup or at specific times of the day.
- Find gages due for recalibration based on Gage Usage criteria.
- Improved support for multiple gage checkouts.
- Improved job-handling support.
- Easy network-client installation.
- New database drivers increases speed and reliability especially over networks.

HARDWARE REQUIREMENTS

- Any PC compatible computer running Windows 98, Me, NT 4.0, 2000 or XP. 2x CD-ROM drive and floppy drive.



Control	Last Cal	Due Date	Name	Status
12283	6/26/2002	6/26/2003	Vr Micrometer	In Service
12283	6/26/2002	6/26/2003	Chrome Meter	In Service
200-7	6/26/2002	6/26/2003	Micrometer 5-4"	In Service
200-4	6/26/2002	6/26/2003	Micrometer 3-4"	In Service
200-6	6/26/2002	6/26/2003	Indicator	In Service
200-4	6/26/2002	6/26/2003	Caliper 6"	In Service
200-3	6/26/2002	6/26/2003	Micrometer	In Service
200-2	6/26/2002	6/26/2003	Micrometer	In Service
200-1	6/26/2002	6/26/2003	Micrometer	In Service
200-5	6/26/2002	6/26/2003	Depth Micrometer	In Service
Standard 4-4"	6/26/2002	6/26/2003	Micrometer Standards	In Service
TSP-01	6/26/2002	6/26/2003	Setting Plug	In Service
10307	6/26/2002	6/27/2003	OD V Micrometer	In Service
20-48	6/26/2002	6/27/2003	Indicator w/ 2500"	In Service
T-41113	6/26/2002	6/27/2003	Micrometer	In Service
36-115	6/26/2002	6/27/2003	Depth Micrometer	In Service
1-3"	6/26/2002	6/27/2003	Universal Counter	In Service
10052	6/27/2002	6/28/2003	Eye-piece	In Service
9947	6/27/2002	6/28/2003	Ring Gage	In Service
95502	6/27/2002	6/28/2003	Thread Plug Gage	In Service
1111	6/27/2002	6/28/2003	Thread Plug Gage	In Service
97210	6/27/2002	6/28/2003	Air Plug w/Range	In Service
9479	6/27/2002	6/28/2003	Ring Gage	In Service
13171	6/27/2002	6/28/2003	Ballbar	In Service
13123	6/27/2002	6/28/2003	Reticle	In Service
980-0118	6/28/1998	6/28/2002	Height Master 1-40"	In Service

